



THE "BERRY" GOOD NEWS



News and Notes from the Strawberry Anglers Association

Briefly . . .

- Lew Robbins and Dick Taylor take top honors in recent SAA fund raiser. See Page 2.
- Director Kapowitz paid a visit to the SAA and shared his ideas. Turn to Page 3 for details.
- Page 4 highlights the changes in fish stocking procedures at Strawberry Reservoir.
- Matt Brimhall caught a big cutthroat through the ice at Strawberry. His story is on Page 5
- KSL Television host Rod Zundel recounts a few of his fishing adventures on Page 6.

Inside . . .

SAA Fund Raiser - A Big Success	2
Director Karpowitz Outlines Challenges	3
Big Change in Fish Stocking Procedures	4
Monster Cutthroat Through The Ice	5
Fishing With Rod "Zip" Zudel	6
Share A Pastime That Lasts a Lifetime	7
Help Prevent Illegal Fish Stocking	7
Another Successful Sportsmen's Expo	8
Angling by The Numbers	8
Kayla's Kooking Korner	9
Upcoming Meeting And Event Schedule 2008	9

Volume 11, Issue 2

April 2008

Hope On The Whirling Disease Front

By Chris Wilson, PhD.
Fisheries Experiment Station

The January issue of the "Berry" *Good News* carried the informative article by Alan Ward about the findings of the whirling disease parasite in the Duchesne River drainage, and the potential dangers to Strawberry Reservoir.

As stated in Alan's article, only one of 54 fish, sampled above the VAT diversion on the West Fork of the Duchesne River in late fall of 2007, tested positive for the parasite. This raised the question of whether the infection had truly progressed upstream, or whether the one infected fish had been infected below and simply traveled upstream. To help determine the answer, small sentinel fish were placed in cages at the VAT and two miles upstream, and exposed to the river water for a period of weeks. DNA testing performed at the Fish

tive. Currant Creek and Strawberry Reservoirs also continue to test negative.

However, since the parasite has spread so rapidly, repeat testing is underway. DWR biologists traveled to the site via snowmobiles in February and placed more sentinel fish into cages. These fish will be sampled in



View of the VAT Diversion on the West Fork of the Duchesne River.



The Hoffer strain of rainbow trout is genetically more resistant to whirling disease and may eventually be stocked in Utah waters, including Strawberry.

Disease Laboratory at the Fisheries Experiment Station (FES) in Logan indicated **no evidence** of infection in these fish. In addition, wild fish sampled at sites further upstream also tested nega-

mid-April and the results of testing will help determine if and where a barrier will be constructed.

The need for a barrier is somewhat tempered by the reality that there are many routes by which the whirling disease parasite can be transferred, other than movement of infected fish. Human recreational activity (movement of infected fish or fish parts, not cleaning equipment, etc), fish eating birds or mammals can also be significant methods of spread. The use of barriers at other locations in Utah has slowed, but not stopped, the upstream spread of this parasite.

(See: "Whirling Disease" Page 9)

SAA Fund Raiser - A Big Success



By Rosemarie Carter

You've probably had a "Piggy Bank" or two in your lifetime; but have you ever saved your pennies in a "Fishy Bank"?

Members of SAA have been doing just that for the past three months; and the pennies are beginning to add up. To kick off 2008, the membership decided to sponsor a "fund raiser" to raise monies for a yet to be determined project at Strawberry Reservoir. So, members who wanted to participate were given a Fish Bank in which they could deposit their "spare change."

The goal was to raise \$1,000 so our membership could select a worthy Strawberry project to sponsor or co-sponsor.

At the March SAA meeting, it was reported that \$649.53 had been raised. The last of the Fish Banks were turned in at the April meeting for a final count. Everyone was delighted to learn that another \$168.23 had been jammed into the remaining Fishy Banks, and SAA President Jim Carter "kicked in" the additional \$182.24 to ensure the goal was met.

Top "penny saver" honors went to Dick Taylor, whose bank contained \$117.50. As first place winner, he received a \$50 gift certificate to Sportsmen's Warehouse donated by President Carter. Second place was awarded to Lew Robbins, who had saved \$90.32, and was rewarded for his efforts with a \$20 gift certificate to Sportsman's Warehouse.

The goal was to raise \$1,000 so our membership could select a worthy Strawberry project to sponsor or co-sponsor.



Top fund raisers Lew Robbins and Dick Taylor were presented gift certificates.

Other "big savers" included Kayla Willey, Val John Halford, Steve and Judie Carter, Robert Spratt, Kathy Burton, Rosemarie and Steve Mitchell, John and Nancy Cederloff, Jim and Rosemarie Carter, Rick Rekoutis, Joe Rohner, and Jim Pike.

If you did not receive a Fish Bank, but would like to contribute to this fund-raising activity, please contact President Jim Carter, Treasurer Ron Dunn, or any of our SAA officers. It's never too late to donate money towards a worthy project at Strawberry Reservoir. Remember, every little bit helps.

Your Strawberry Anglers Association (<http://www.strawberryanglers.com>)

Officers

President - Jim Carter	(801) 269-0619
VP / Membership - Steve Carter	(801) 756-2418
Treasurer - Ron Dunn	(801) 268-1072
Secretary - Rosemarie Mitchell	(801) 254-7347
Public Relations - Brandon Anderson	(801) 277-6092
Work Director - Steve Mitchell	(801) 254-7347
Education - Robert Spratt	(801) 304-0994
Political Advisor - Ed Kent	(801) 573-0770
Communications - Loren Brooks	(801) 292-4080

The "Berry" Good News

Published in January, April, July, and October by The Strawberry Anglers Association, 735 Labrum Avenue, Salt Lake City, Utah 84107

Printing by Four Seasons Printing Service

Newsletter Editors:

Kayla Willey	(801) 224-0790
Val John Halford	(801) 363-4250

Webmaster - Lisa Parker contact via web

**Next SAA Meeting
Tuesday, May 6
6:30 p.m.**

Utah Division of Wildlife
Resources Building
1594 W North Temple

QUAGGA MUSSELS

Speaker

**Evan Freeman
DWR Biologist
Aquatic Nuisance
Species Officer**

Director Karpowitz Outlines Challenges

By Kayla Willey

The Director of the Utah Division of Wildlife Resources, Jim Karpowitz, paid a recent visit to the Strawberry Anglers Association. He was interested in sharing his views, priorities, answering questions, and listening to ideas that SAA members wished to put forth for his consideration.



President Carter and DWR Director Jim Karpowitz share ideas on how to maintain Strawberry excellence.

A Number Of Successes

Jim is very proud of his aquatics staff and thinks “fishing has never been better.” The fact that Strawberry Reservoir’s management team won a national award is indicative of the high quality of fishing in Utah. One of the keys to the DWR’s success has been the partnerships with various sportsmen’s organizations, including the SAA, and the many volunteers who help. Although Utah has one of the smallest wildlife staff and budgets in the West, it does more with the resources it has available.

The state’s fish hatcheries will produce over 1 million pounds of fish this year, a new record. This significant increase is taking place despite the fact that the hatcheries at Midway and Springville are currently undergoing renovations. For example, the Whiterocks Hatchery, which reopened in February 2007, will produce 140,000 pounds, an increase of 100,000 pounds over its previous yearly production.



Jim has been an angler ever since he was old enough to hold a pole.

Finally, angling in Utah produces over \$700 million for the state, which makes it a larger revenue generator than the skiing industry. Fishing also supports approximately 13,000 jobs state-wide, produces \$40 million in tax revenue, and provides over 400,000 licensed anglers in Utah with thousands of hours of enjoyment.

A Number Of Challenges

Despite the good news, Jim mentioned that the DWR faces several important challenges over the next several years. High on that list is the potential of invasive species and diseases impacting our state’s fishing quality. Aquatic nuisances, such as the New Zealand mudsnail and quagga mussels, along with potential spread of whirling disease, are of special concern.

The DWR wants to be very proactive in their response to these threats. To help combat invasive species, Jim hopes for support from the Utah State Legislature. He has requested \$1.65 million to help keep aquatic nuisances out of Utah. An extensive educational outreach program is planned to meet this challenge.

Finally, the Utah Division of Wildlife Resources needs to discover ways to retain its highly motivated and trained personnel. Utah currently pays their DWR employees 18 to 20 percent below states in the intermountain region. Important leadership positions have been vacated by recent retirements and new managers will need time to learn their jobs. However, Jim remains very optimistic about the future and is confident that these challenges can be successfully met.

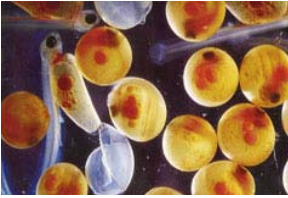


One of the keys to the DWR’s success has been the partnerships with various sportsmen’s organizations, including the SAA, and the many volunteers who help.



Big Change in Fish Stocking Procedures

By Justin Robinson
DWR Project Biologist

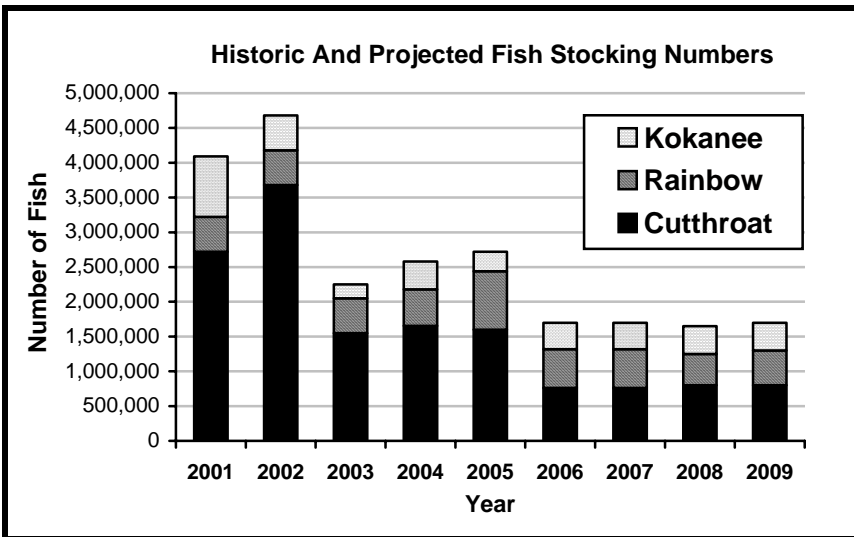


The gill net surveys of the past several years have failed to return certain age groups of both rainbow and cutthroat trout stocked in Strawberry. Much like the smaller chubs that have practically disappeared, we believe these young trout have fallen prey to larger fish. Recognizing the need to reduce the loss of our fish stocks, Strawberry biologists have requested larger size fish from the DWR hatchery system.

The numbers of Kokanee salmon, rainbow, and cutthroat trout in our stocking quotas have declined by 20 to 25 percent from 2003 to 2007.



The stocking of larger fish at Strawberry will reduce their loss to predators and help increase survivability.



We predict that this decline in stocking numbers will continue into the foreseeable future. (See Figure 1). However, to offset the fewer numbers of game fish being stocked into Strawberry is a dramatic increase in the total number of pounds. This amount is projected to nearly triple in 2009 from the number of pounds stocked in 2003. Hatchery managers have responded to our request and are gearing up to produce larger fish for Strawberry (See Figure 2).

With the changes in the stocking program, we are expecting that any declines in angler success you may experience in the next year or two will be mitigated in the future. Right now there are not as many fish in the middle age classes, 15 to 18 inches, as we have been seeing recently.

When the older fish are harvested, or die of old age, there will be fewer fish to replace them. This will lead to two consequences. First, overall fishing success at Strawberry may slow down over the next few years, but will likely rebound as the larger fish to be stocked recruit into the fishery over the next few years.

On the bright side of that situation there will be less predation on the stocked fish and the younger age classes should survive very well. In other words, if we do see a decrease in cutthroat population numbers, it will soon change around and we will see a renewed younger population of cutthroat and rainbows. In the mean time get out there and chase those really big fish. Alan and I are predicting that this winter season may be the best chance so far to get a really big cutthroat at Strawberry. So, sharpen up your ice auger and head out for some great cold weather fishing.

Figure 1. *The number of game fish stocked at Strawberry: 2001 to 2009.*

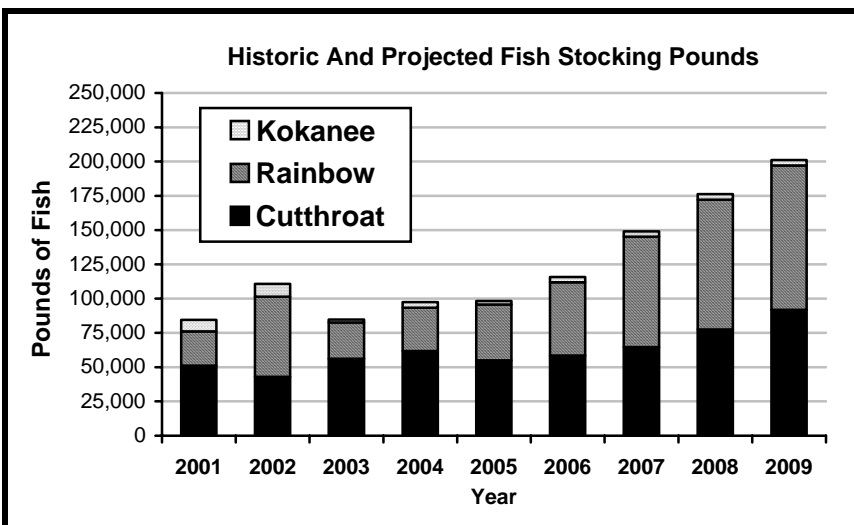


Figure 2. *The pounds of game fish stocked at Strawberry: 2001 to 2009.*

Monster Cutthroat Through The Ice

By Matt Brimhall

I fish Strawberry Reservoir many times a year throughout the ice fishing season. It's a long drive from Ogden, but well worth it. The size of the fish and consistent bite all year round never ceases to amaze me.



Matt Brimhall with a trophy cutthroat and a big smile.

For a lot of people it is hard to believe that a person can go out and catch 50 fish in a single day of fishing. Well Strawberry is that kind of place. Not only can you catch tons of fish in a single trip, but the average size of the fish is about 19 inches. I can't think of any other trout fishery in the world that offers that.

Every year around Christmas time, my friends and I get geared up for ice season. This year we planned on fishing the day after Christmas, the following Saturday, and New Years day. Our first trip proved to be a great start as we caught about 50 fish between the two of us. New Years day also rewarded us with about 40 to 50 fish, but it was the 29th of December that proved to be especially rewarding. It began just as any other day at Strawberry. We hiked to our hot spot near the Strawberry Bay Marina and set up for the day. We immediately started to catch fish and it stayed consistent until about 10:00 am when the action

started to slow. The bite was pretty light and you had to pay very close attention to your strike indicator. We were using various tube jigs and grubs tipped with either a meal worm or a piece of red-sided shiner minnow.

About 10:30 am I was just relaxing and talking with my friends when I noticed that my strike indicator started to bounce. Just like any other nibble, I waited for a good bite and set the hook. When I pulled up to set the hook, my rod pulled back and dove into the water with my hand attached to it. I slowly brought it back up and set the drag, the line ripped off of the reel and the fight was on. I played the fish as calmly as possible knowing that the jagged ice could cut the line at any time. After about ten minutes, I got his head up to the hole and knew that it wasn't going to be an easy task to land him. One of my friends grabbed the fish under the gills and flipped him up onto the ice. I was in shock! I knew he was a particularly fat specimen, but didn't realize how long he was.

My first thought was about 24 inches, but he stretched the tape 27 inches and his girth measured 15 inches. Unfortunately we didn't have a scale to weigh the big cutthroat, but I had a friend do some calculations and he claimed the trout weighed around 7 pounds. However, I remain convinced that the big fish weighed at least 8 to 9 pounds, if not more. It's the biggest trout I have landed in my life and an experience I will never forget.



This special day of ice fishing at Strawberry will live long in the memories of Matt and his good friends.



When I pulled up to set the hook, my rod pulled back and dove into the water with my hand attached to it.



Fishing With Rod “Zip” Zundel

By Kayla Willey



Born in Brigham City, Rod was raised in West Fielding, a small city just outside of Tremonton, Utah on a dairy farm. During his years at Bear River High School he played football, tennis, and

mother, LaDene, is also an avid angler, and now loves fishing at Strawberry Reservoir again. On a trip last November on a very cold morning with John Beck along, Rod and his mother had a great day! Everyone in his family was able to keep a fish over twenty-two inches and they threw back at least six cutthroat over twenty-two inches!



Gracious and entertaining Rod Zundel with SAA President Carter.

Rod would like to help the SAA and other angling groups to get even more rainbows stocked at Strawberry. The current plans call for 850,000 rainbows to be stocked every spring. To grow larger fish for stocking, angling groups need to raise an extra \$15,000 a year to pay for the food and space. Rod would like to help our cause and he offered some ideas how to do so. He thought various angling organizations could talk with management at both Sportsman’s Warehouse and Cabelas and ask them to donate a single penny on each purchase of bait or lures commonly used at Strawberry. The revenue generated by these sales would go towards

basketball. He was the football team quarterback and received statewide honors for his performance. He went on to study journalism and is now the sportscaster for Channel 5, but has been an avid fisherman his whole life.

helping the state raise and stock larger rainbows. The stores would get free publicity and the anglers would enjoy an improved fishery.

Rod learned how to fish as a child from the bank with a bubble and worm from his uncle and grandfather at Deep Creek and Devil Creek in Idaho, or he just fished for carp or catfish out of the canal near his home that his grandmother cooked up mighty tasty. The biggest fish of his life was a 12 lbs. carp, caught when he was eight years old on a safety pin and worm out of that old canal. For years he watched with rapture on television the hundreds of boats out on Strawberry on opening day and dreamt of fishing Strawberry Reservoir someday.

Rod is planning to do a show this spring on Channel 5 when the DWR begins stocking larger fish in Strawberry. He promised even broader exposure if we are successful in forming a coalition with local stores. At the end of his presentation, Rod put his money where his mouth was and joined the Strawberry Anglers Association. We are grateful to have such an influential and supportive angler among our ranks!

That someday finally came, and now as a sportscaster for KSL Channel 5 he enjoys fishing with the likes of Ed Kent, The Phillips’, and our own Jim Carter. Eight years ago his family began to come to Strawberry Reservoir for their annual fishing outing. He had some serious concerns for the family fishing when the regulations changed at Strawberry Reservoir in 2002, but has been very impressed with how successful the new regulations have been. His eighty year old



Rod’s mother, LaDene, and a nice Strawberry trout.

The biggest fish of his life was a 12 lbs. carp, caught when he was eight years olds on a safety pin and worm. . . .



Share a Pastime That Lasts a Lifetime

By Robin Thomas
DWR Marketing Coordinator

Remember your first fishing trip? Sure you do, and you certainly remember who took you. For me, it was my brother who introduced me to the sport of fishing when I five years old. My early years of fishing consisted mainly of drowning worms, throwing rocks, and getting my shoes to make that neat squishy-sloshing sound, but I knew fishing was fun. I don't recall catching anything that I would brag about today, but those experiences are why I am still fishing.

Since your first fishing experience, you've probably taken others fishing yourself, sharing the ac-



A good time to learn how to fish is when you're young.

tivity that has become such an important part of your life and who you are. That's what Anglers' Legacy is all about – simply giving back what you've been given, by making a promise to introduce somebody new to the activity you love.

Become part of Anglers' Legacy today, a group of folks from all across the country who, like you, are giving back. There's no membership fee and no obligation - you are just making a promise to do your part to share your knowledge and expertise with someone new. By introducing someone new to the sport, you're not only sharing the gift of fishing, you're also helping increase fishing license sales, which helps to fund the resource you enjoy. Take someone fishing – a family member, co-worker, neighbor, acquaintance at church or, perhaps, the mechanic who works on your car.

I hope you'll join with me and officially pledge to become an Anglers' Legacy Ambassador. Go online to anglerslegacy.org website and click the "Take The Pledge" button. You will be prompted to enter some basic information. Be sure to check the box to receive an Anglers' Legacy window decal so your commitment to sharing the legacy and tradition of fishing will be visible to everyone - I'll be watching for you.

The Anglers' Legacy Pledge

"I, as an Anglers' Legacy Ambassador, do pledge to introduce at least one acquaintance to fishing each year who has not yet had the pleasure of participation. To deliver a quality introductory experience by sharing my patience, skills, knowledge and equipment. To help the first-time angler understand, appreciate, and value what fishing is all about. And I promise to do these things because I want to give back what someone once gave to me – the special gift of fishing."



*... simply
giving back what
you've been
given, by
making a
promise to
introduce
somebody new to
the activity you
love.*

Help Prevent Illegal Fish Stocking

There are a number of good reasons why moving fish is bad for anglers statewide. Illegal introductions can adversely affect native and endangered fish. Non-indigenous fish species may bring with them disease, parasites, or aquatic nuisances.

Utah takes illegal fish stocking seriously. Releasing a live fish into the wild is a Class A misdemeanor. Those persons who are found guilty of

violating this law can be fined up to \$2,500 and spend up to one year in jail.

Anglers are the first and best line of defense in keeping fishing great in Utah for years to come. If you know that someone has placed fish in a water illegally, call 1-800-662 DEER (3337). If you wish to remain anonymous, wildlife officers will honor your request.



Another Successful Sportsmen's Expo

By Val John Halford



A long list of notable sportsmen were on hand, including the host of the "Trail Of The Sportsman," Don Mecham.

For the last ten years, Utah's avid sportsmen have enjoyed "March Madness" at the South Towne Exposition Center in Sandy. Tens of thousands of anglers and hunters crowded into the spacious facility to experience the state's largest outdoors show - the 2008 International Sportsmen's Expo.

Over 500 exhibiting companies sponsored a wide variety of booths that offered virtually every kind of outdoor product and travel destination. A number of new show features and events were offered event visitors, including "Splash Dogs," a water-jumping contest for hunting dogs, two trophy displays, Antler-Fest's "Shed Mountain," and the "Frost Bite Challenge," a barbeque cooking contest.



Television host Reece Stein and DWR biologist Roger Wilson.

As with previous years, the ISE was the site of the "Youth Outdoor Sports Fair." Sponsored by the Utah Division of Wildlife Resources and the Utah State Parks, children were kept busy with a variety of different activities including leaf printing, animal track identification, boat safety, hiking and camping tips, and fly tying.



Longtime SAA members Lee Rasmussen and Earl Latimer lend a hand.

A long list of notable sportsmen were on hand, including the host of the television show "Trail Of The Sportsman," Don Mecham. SAA members may recall Don's generous contribution last year which helped fund the stocking of additional rainbow trout at Strawberry Reservoir.

This year's ISE was a big success, attracting a record number of visitors. If you failed to attend, you missed out on the fun and excitement.

Angling By The Numbers

According to a 2006 U.S. Fish and Wildlife survey, sportsmen and women spend \$76 billion per year in search of that feisty steelhead or six-point buck. The following points are a few interesting findings from a recent federal report.

- More people, 30 million, go fishing each year than go to Disney World, 16 million, the number one vacation destination in the world.
- Spending by hunters and anglers is more than the combined revenues of Microsoft, Google, eBay, and Yahoo.
- The sports fishing industry supports twice as

many jobs as the U.S. Postal Service.

- If the \$76 billion that sportsmen spend on hunting and fishing were the gross domestic product of a country, sportsmen as a nation would rank 57th out of the World Bank list of 181 nations.

Through excise taxes and license revenues, hunters and anglers have contributed more than \$10 billion to state and federal conservation programs. In fact, sportsmen provide more than 80 percent of the funding for most state and fish wildlife agencies.



Whirling Disease

(Continued from Page 1)

While it may not be possible to prevent the spread of the whirling disease parasite, the DWR will be implementing some new, cutting-edge technology to help manage the impact of the infection. Recent research has shown that there are several distinct genetic families of tubifex worms, the intermediate host for the parasite. Genetic tests are underway to determine which families of worms



Current Creek Reservoir may soon be stocked with Hoffer rainbows.

are predominant in the West Fork. If susceptible worms are found, it might be possible to eradicate them and replace them with more resistant strains to help break the life cycle. The DWR has just received several samples of the resistant strains of worms, which will be raised at FES.

Another tool, perhaps even more promising, is the discovery of whirling disease resistant rainbow trout. These fish are a blend of trout raised in the presence of whirling disease in Germany for over 100 years, and wild rainbow trout from Montana. Research has shown these fish don't develop the signs of disease and show more than 90 percent reduction in spore development. Utah has already developed a broodstock of these fish, and plans are underway to stock these fish into Currant Creek Reservoir in 2008, and possibly Strawberry Reservoir in the years to come. Biologists are cautiously optimistic these new tools may help to minimize the spread or effect of the parasite, if it does become transferred via the VAT diversion.



... the DWR will be implementing some new, cutting-edge technology to help manage the impact of the infection.



Kayla's Kooking Korner



Trout Pie (makes a great breakfast!)

Filling:

- 1 cup flaked, cooked trout
- 1/2 cup half and half or milk
- 3 eggs, slightly beaten
- 1 cup ricotta cheese
- 1/2 cup chopped onion
- 2 tablespoons flour
- 2 tablespoons snipped parsley
- 1/8 teaspoon salt
- 1/8 teaspoon pepper
- 1/8 teaspoon oregano
- 1/8 teaspoon paprika



Crust:

- 2 cups cooked rice
- 3 tablespoons grated Parmesan cheese
- 1 egg white

Heat oven to 375 degrees. Grease 9-inch pie plate. In medium bowl mix rice, Parmesan cheese and egg white. Press into pie plate to form crust. Set aside.

In medium bowl, blend filling ingredients. Pour into rice crust. Sprinkle with paprika. Bake until knife inserted in center comes out clean, 30-40 minutes. Let stand 10 minutes before cutting.



Upcoming Meeting and Event Schedule 2008

May 6

SAA Meeting

Evan Freeman, DWR Biologist
Aquatic Nuisance Species Officer

June 3

SAA Meeting

Jim Gunderson, Owner
Fish Tech Outfitters

July 1

SAA Meeting

Steve Warner, Manager
American Land and Leisure

August 5

SAA Meeting

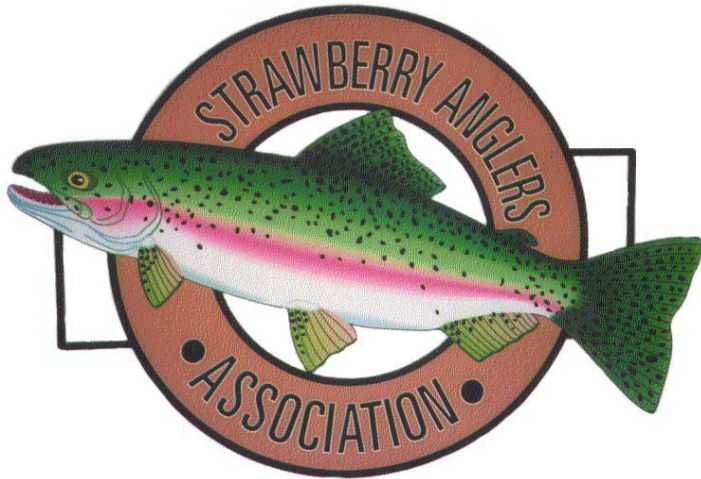
Beverly Heffernan, NEPA Specialist
United States Bureau of Reclamation

Strawberry Anglers Association

735 Labrum Avenue
Murray, Utah 84107

Jim Carter, President
(801) 269-0619

Non-Profit Org.
US Postage Paid
SLC, UT
Permit #271



Thanks to Our Corporate Sponsors



**Fish Tech
Outfitters**
Tackle, Techniques, Tales

6153 South Highland Drive
Salt Lake City, Utah 84121

801-272-8808
Fax: 801-272-6935



**Brent Halstrom
Robert L. Halstrom**
Sales & Service

801.619.0980
57 East 12675 South, Suite B
Draper, Utah 84020
www.halstrommarine.com

P.O. Box 219
Heber City, UT 84032
www.strawberrybay.com

**Strawberry Bay
Marina and Lodge**



Paul Phillips
Owners

Store: (435) 548-2261

DEDICATED TO THE PRESERVATION OF STRAWBERRY RESERVOIR

Website: www.strawberryanglers.com



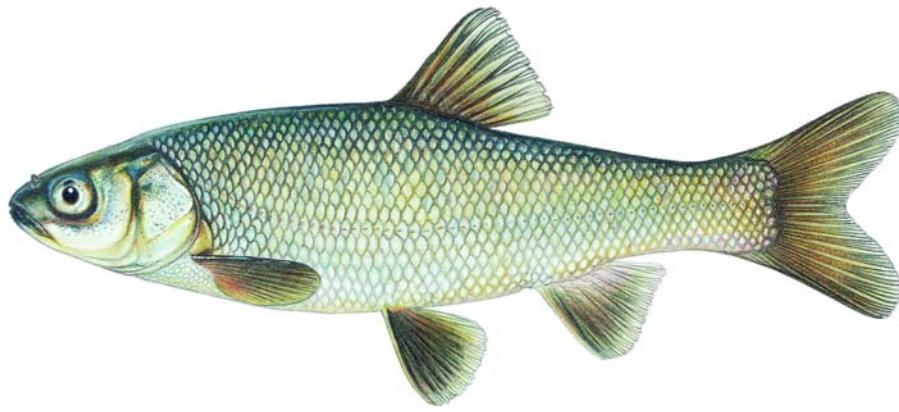
SUMMARY OF EFFORTS TO CONTROL WHIRLING DISEASE ON THE WEST FORK OF THE DUCHESNE RIVER, UTAH

*By: Walt Donaldson, Roger Wilson, Chris Wilson, and Roger Schniedervin
Utah Division of Wildlife Resources*

December 2007

1. Late 1990's: Genetic analysis of West Fork Duchesne River (WFDR) trout confirmed to be pure-strain Colorado River Cutthroat Trout by BYU.
2. Late 1990's - early 2000's: Over 1,000 cutthroat trout moved from WFDR to the Sheep Creek Lake brood station for use as a spawning operation for stocking South Slope GMU (Uinta Mountain drainages) with pure strain cutthroat trout.
3. 2001-Present: Several hundred thousand pure strain cutthroat eggs are taken annually from Sheep Creek Lake for aerial/truck/horse stocking in selected Uinta Mountain drainage lakes and streams.
4. Fall 2006: Positive whirling disease (WD) trout were confirmed by FES in the Duchesne River near the confluence of the West and North Forks. Further WD tests indicated negative results in trout within one mile below the Vat CUP Diversion Dam. A sample collected above the Diversion Dam also tested negative for WD.
5. Late fall 2006: After consultation with NER and FES biologists, the decision was made by the Aquatics Chief to proceed with installing a barrier about 1 mile below the Vat Diversion for three reasons: (a) Negative WD trout results were found in the area and NER had identified a very good barrier site; (b) the site would create a double barrier location to depopulate trout to further reduce infection risk; and (c) the site would prevent positive fish moving above the VAT and going into the collection system into the Currant Creek and Strawberry Reservoir drainages.
6. December 2006: NER submitted a fish passage barrier proposal to both the Habitat and Blue Ribbon Fisheries Advisory councils for funding.
7. February 8 2007: Meeting at Strawberry Visitor Center with UDWR, USFS, and CUWCD personnel to discuss issues and options for WF Duchesne River.
8. March 2007: Salt Lake and NER aquatic staffs met to confirm the importance of completing the fish passage barrier on the WFDR during annual work planning, and to continue monitoring WD in the drainage. The priority basis is to protect the pure strain stocks of Colorado Cutthroat trout in the system, and to prohibit the spread of WD through the SACS via the Vat Diversion.
9. April 2007: The Habitat Council funded \$30,000 to NER for construction of the fish passage barrier during summer/fall of 2007.
10. May-July, 2007: Salt Lake and NER staff coordinated with the Uinta National Forest to expedite completion of the NEPA requirements for barrier installation.
11. June 13 2007 NERO Fisheries personnel collect fish from WF Duchesne at a location approximately ½ mile below the USFS boundary. This sample location is downstream approximately 1.5 miles from the negative sample that was collected below Vat Diversion Dam in the fall of 2006. A sample was collected at this site to assess how far upstream WD may have spread in the WF Duchesne system. Additionally, just above this location is a large beaver dam complex that comprises approximately 1 mile of stream. Collectively, DWR personnel believed the beaver dam complex provided significant protection from fish migration upstream, and likely explained the negative test results for samples collected below the diversion during November 2006. Fish from this sample were positive for WD.

12. August 2007: The Uinta NF authorized the barrier installation upon completion of NEPA requirements.
13. September 2007: NER completed the stream alteration permit for the barrier with Utah Water Rights. Also, they begin lining up the Division's field crew for barrier construction in October 2007. In consultation with CUP, this time frame would be during low flows reducing construction problems. NER biologists identify several potential sources for barrier rock, including the Strawberry River Quarry and several private sources along Wolf Creek and near the North Fork confluence.
14. September 24 2007: Strawberry Project and NER biologists submitted trout for replicate WD testing to FES. Results came back positive for WD in trout samples collected at and above the proposed barrier site. Given the positive WD result, plans to construct a barrier below Vat Diversion are cancelled. Because CRCT are spring spawners and exhibit a strong behavior to run upstream, biologists suspect infected trout may have defeated the extensive beaver dam complex during May/June 2007, coinciding with local spring runoff.
15. October 26, 2007: NERO biologist collects 54 fish sample above Vat Diversion Dam that returns 1 WD positive fish. Probable sources of infected fish could be anglers cleaning fish, spores on boots, and/or fish passage through the beaver dams and Vat Diversion during low flows.
16. October 2007: Various discussions, site visits, etc. between Division biologists, CUP, and Uinta NF on management alternatives given the rapid upstream advancement of WD into the upper WFDR drainage.
17. November 21, 2007: All groups met to discuss our options: Decisions made include: (a) Move the barrier site about 1 mile upstream of the Vat Diversion to protect the pure strain cutthroat trout stocks, (b) immediately rock the plunge pool outlet pipe to prevent further movement of positive WD trout moving above the VAT Diversion and increasing spore loading into the SACS, (c) coordinate with NER, Strawberry Project and CUP regarding the feasibility, construction and operation of an electric grid for use at the Vat Diversion when the main gate is opened, (d) Uinta NF to execute an emergency categorical exclusion to move the barrier site above the Vat Diversion, and (e) coordinate with Habitat Section to secure a high priority for use of the Heavy Equipment/Maintenance crew for fall/winter barrier construction.
18. Late November 2007: NER coordinates with Water Rights and receives authorization to transfer the existing stream alteration permit to the new barrier site. Permission also received from the BOR Provo Area Office to place rock below the VAT Diversion bypass outlet and to construct a 10-ft wide metal screen for the top of the diversion spillway. According to discussions during the November 21 meeting, this screen will be deployed by CUP personnel during future pond cleaning operations to provide an additional obstacle to fish movement. Either the Uintah High School metal/welding shop (pending) or NER personnel will fabricate this screen.
19. December 7, 2007: NER Maintenance Specialist scheduled to place rock to the VAT Diversion using regional backhoe, however snowstorm precludes hauling equipment to the site. Sentinel fish (CRCT fingerling in minnow traps) are retrieved from three sites above the diversion, however high mortality results in low sample size. Heavy equipment operators from CRO visit site and determine road conditions are unsafe for hauling rock in dump trucks.
20. December 13, 2007: NER biologists meet CUP personnel at VAT Diversion to place rock. Approximately 100 cutthroat trout fry from Whiterocks Hatchery are placed in each of two live cages just above the diversion and at the new barrier site (CUP plowed the road earlier in the week for unrelated repairs).
21. December 2007 Update: (a) Uinta NF categorical exclusion decision authorizes the change for the new barrier site, (b) NER and DWR construction crews assess the feasibility of winter barrier construction if the road is plowed or defer it to pre-runoff early next spring (employee safety issue), (c) FES to continue WD tests on sentinel fish above the Vat Diversion, (d) Hofer/Harrison eggs (WD resistant rainbow trout eggs) acquired by FES from Colorado DOW for inclusion into the stocking program for Currant Creek and Strawberry Reservoirs starting 2008, (e) electric grid construction by Uintah HS still pending, and (f) further management discussions on how to depopulate the stream segment of trout between the Vat Diversion and the upstream barrier to reduce spore loading through SACS (fishing closure, electro fishing to remove trout for three years, inoculate stream sediments *Tubifex* resistant worms, etc.).



ATTENTION ANGLERS

DON'T BE A CHUB

Submit articles to *The "Berry" Good News*

The newsletter editors are looking for articles, with photographs to illustrate them, about your fishing experiences, tackle tips, or other information about Strawberry Reservoir

Please E-Mail Your Articles And Photos To:

**Kayla_Willey@byu.edu
vhalford@wfrc.org**

Or Mail Written Articles To:

**Strawberry Anglers Association
735 Labrum Avenue
Murray, Utah 84107**

SUPPORT YOUR NEWSLETTER

